

EVERLAND PANDA WORLD



Project summary

- **Project name** : The show house in EVERLAND PANDA WORLD
- **Type** : Indoor facility for animals in an amusement park
- **Location** : Yong-in, Korea
- **Architects** :
 - **Main design** : Dan Pearlman (Germany)
 - **Local design** : SHIM SEABO & HWANG HYUNCHOL at Samoo Architects & Engineers
- **Inspector** : Samoo CM
- **Contractor** : BMB
- **Clients** :



EVERLAND
RESORT



CHEIL INDUSTRIES



Requirements for the show house

Environmental

“as Natural habitat as possible”

- Place for animals requiring extraordinary sensitive care
- Natural sunlight for animals and plants
- Vegetation that visually healthy and good looking
- Indoor that doesn't seem like it
- Enough shade
- Reduced vibration and noise

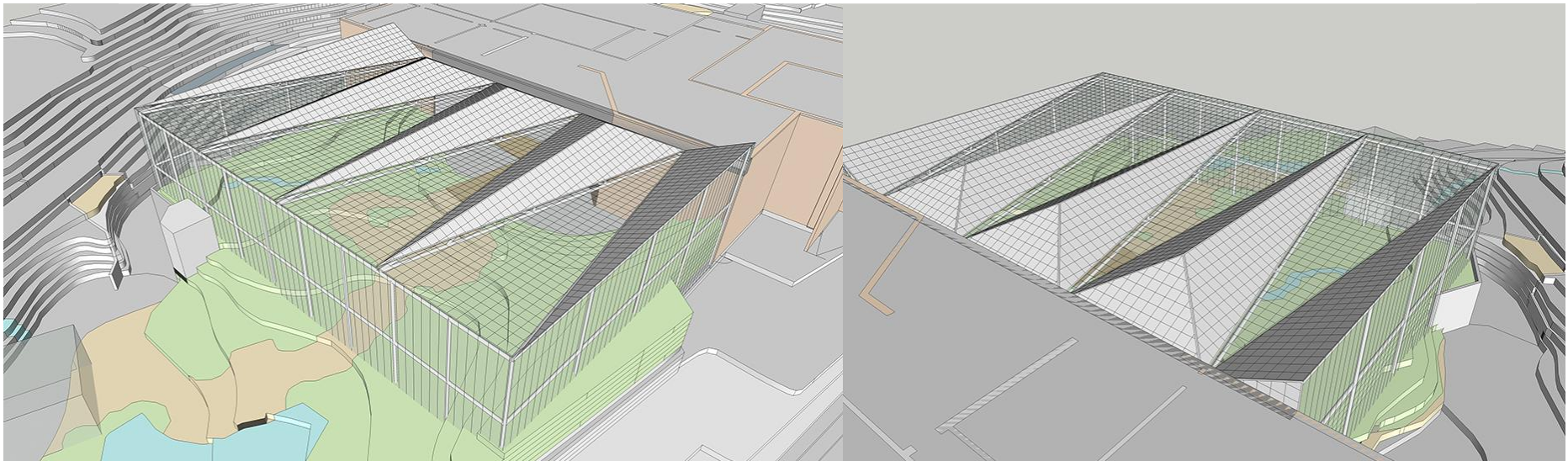


Work flow

Design

Design theme : Valley of Sichuan, China, Panda's home

- Fifteen international panda experts involved
- Airy and transparent external appearance
- 27M Roofing
- Light weight and easy installation
- The show house connecting to indoor & outdoor facilities with shop, café, cinematic room and caretakers' areas

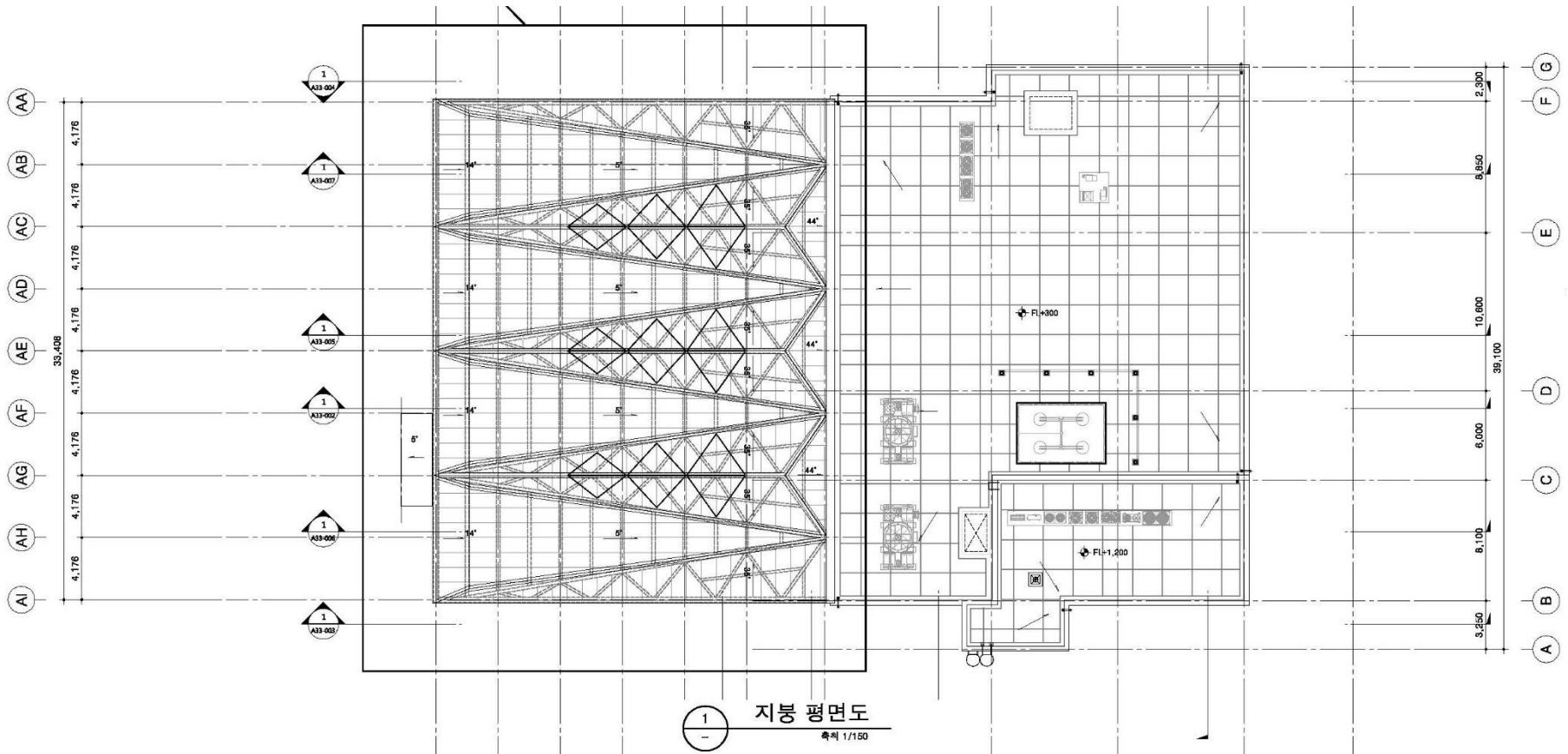


Work flow

Plan – Drawing & Details

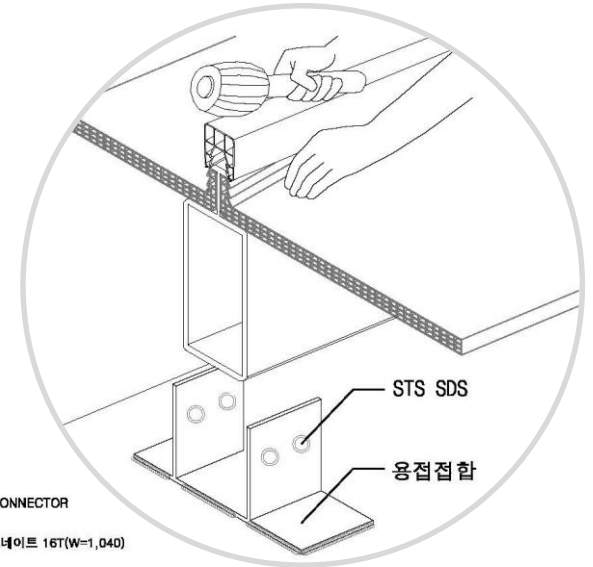
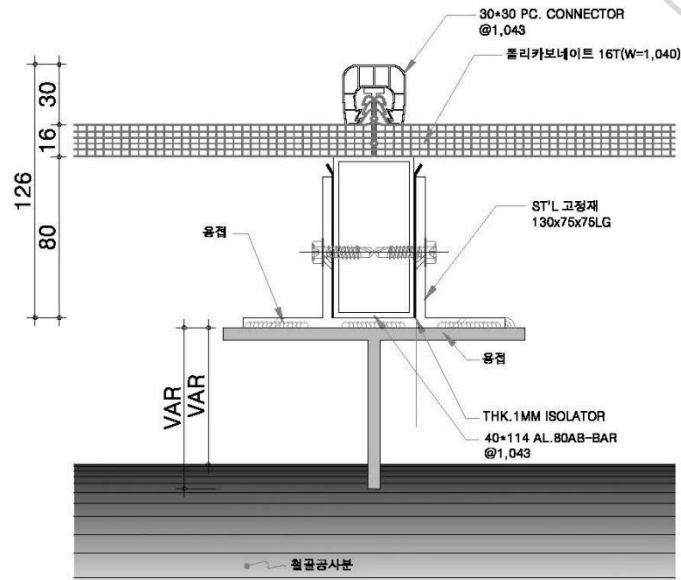
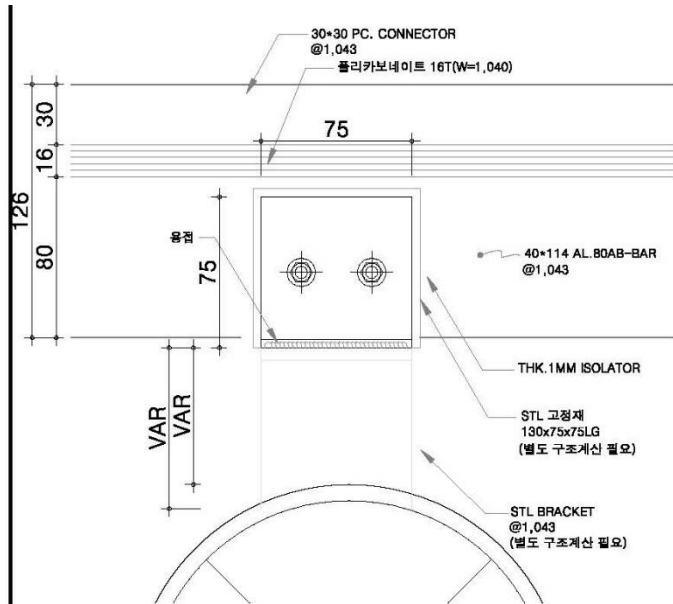
Applied Danpal Solution

- 16T 1040 ICE SG (1500m²) – Free Span Roofing System (AB-BAR) 27M long panels
- 16T 1040 ICE DG (500m²) – Façade Advanced NM System



Work flow

Plan – Drawing & Details

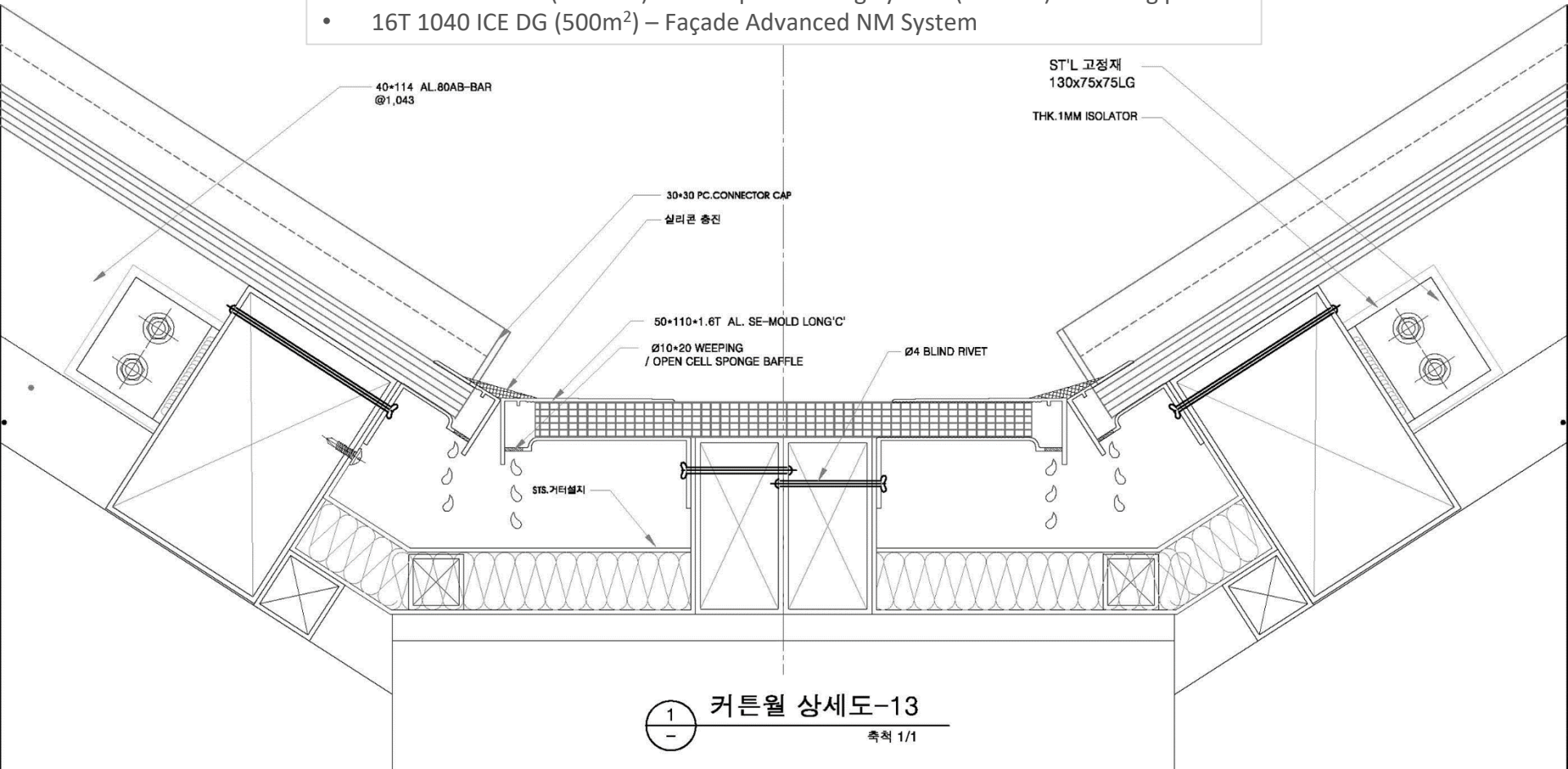


Work flow

Plan – Drawing & Details

Applied Danpal Solution

- 16T 1040 ICE SG (1500m²) – Free Span Roofing System (AB-BAR) 27M long panels
- 16T 1040 ICE DG (500m²) – Façade Advanced NM System



Work flow

Bid & Contract

- The initial plan was to cover the show house with glass entirely but...
- Only Danpal products can satisfy all the requirements :
 - ✓ Product features and benefits that triumph over those of glass material
 - ✓ Indisputable product quality & technical supports
 - ✓ Better understanding of all requirements
- Client chose Danpal with any costs

Work flow

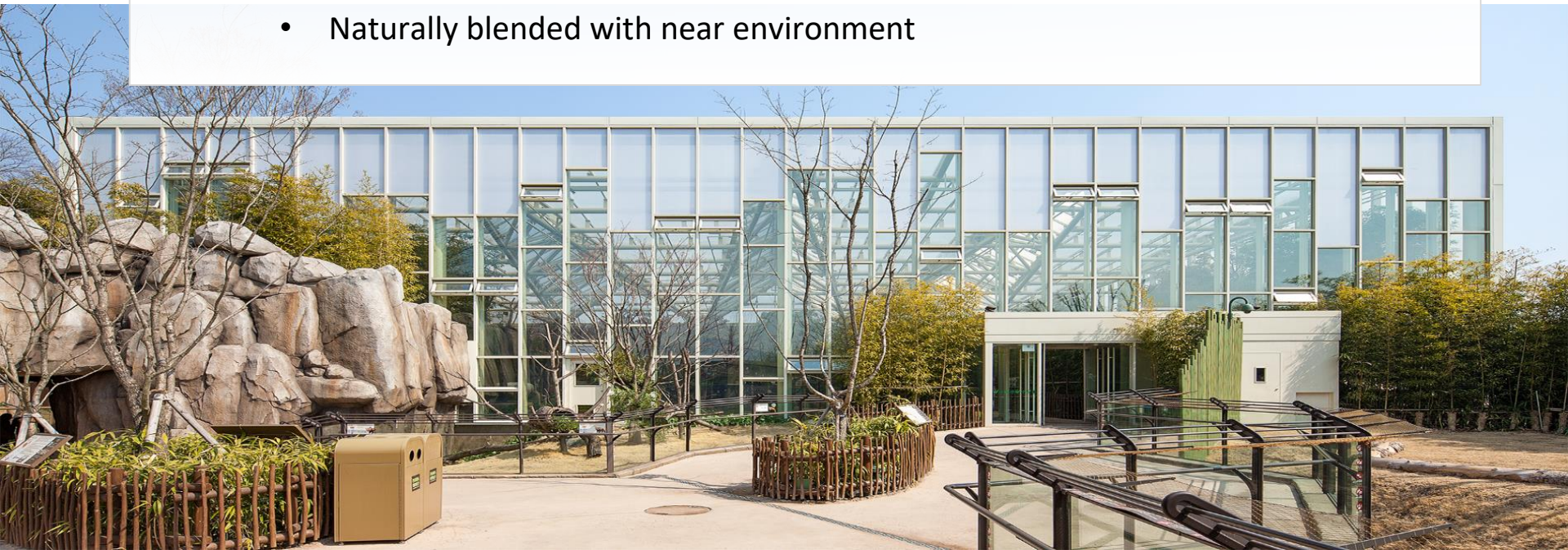
Installation

- Manually carried long panels by hands due to no lifting vehicles accessible to the site
- Delivery was done during over night to dawn because it opens 365 days
- Construction continued until February 20 2016
- Panda World opened in April 21 2016



When requirements meet the best solution

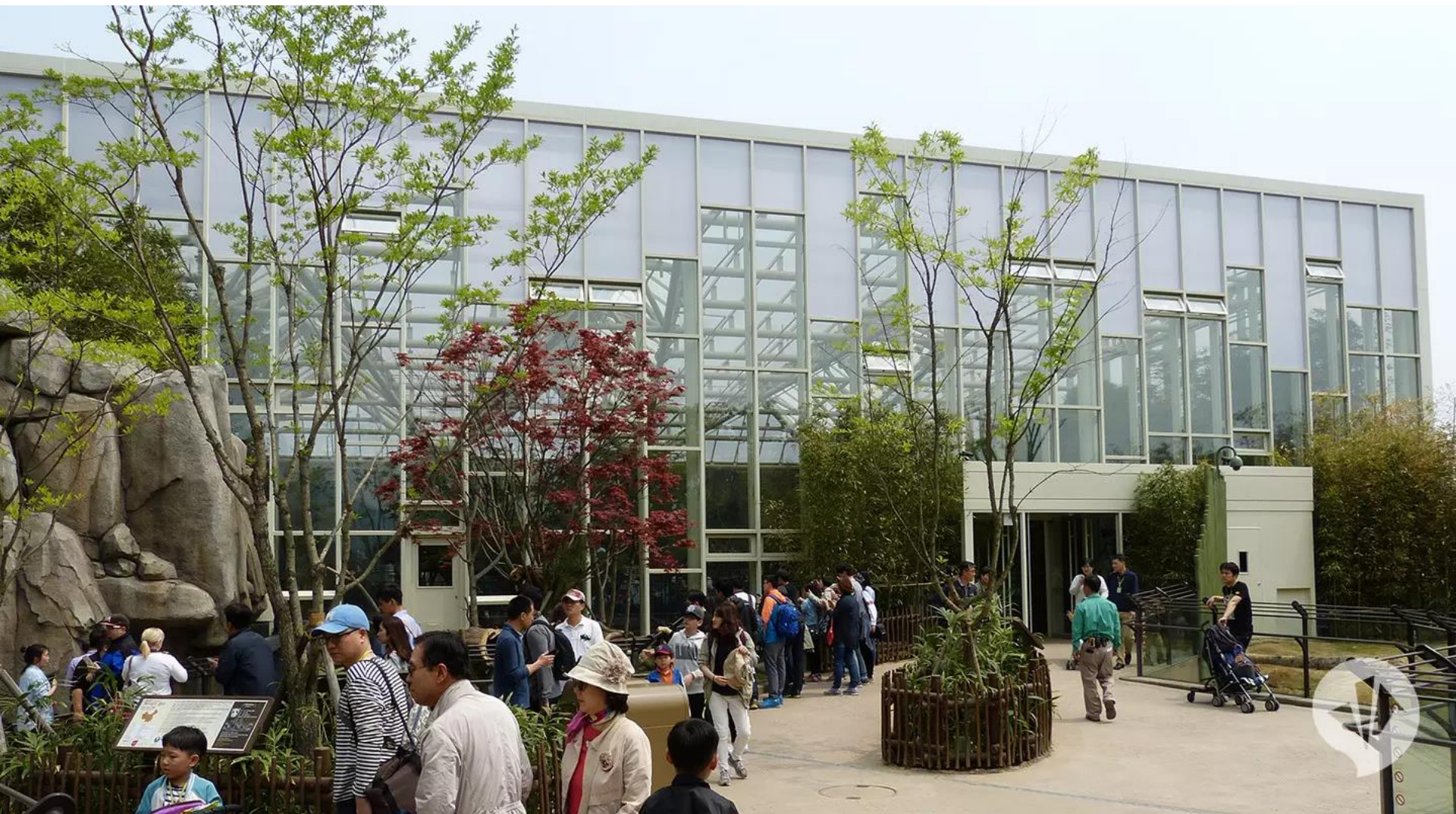
- **Danpal Solution :**
 - Transmitting natural light
 - Avoiding direct sunlight in hot summer days
 - UV protection
 - Thermal Insulation providing suitable temperature to pandas and other animals
 - Naturally blended with near environment



Result



Result



Result



Result



| Result



Result



(image source from Everland website – <http://www.everland.com/web/everland/main.html>)