

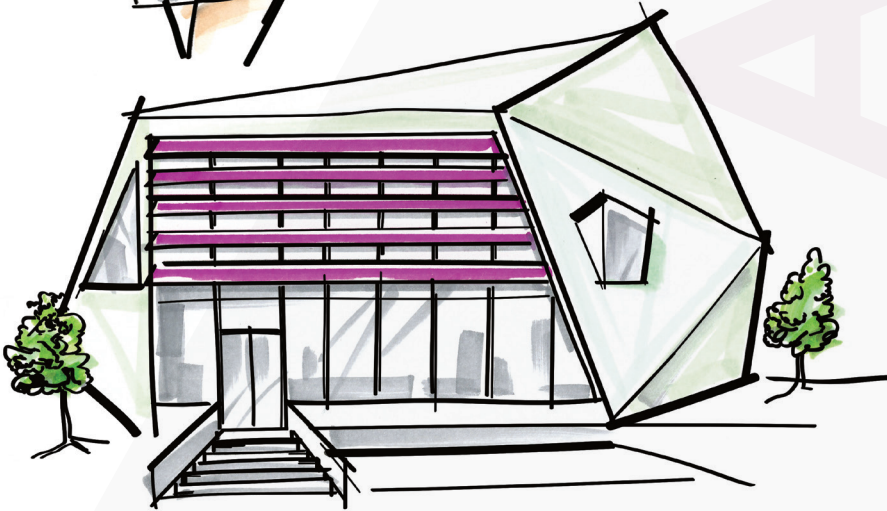
DANPASHADE

# Aura

Translucent  
Shading System



**Shade  
with style.**



SHADING

**Danpal®**  
Light Architecture

Introducing

# DANPA SHADE Aura

Our new **translucent shading system** solution is designed to give any structure an all-encompassing HQE (high-quality environment). This ultrasmart design replaces the need for a more costly mechanical louvre system.

Here's how it works. The unique Z-Frame internal structure utilizes a zigzag like design that limits glare and solar radiation, while still permitting sufficient natural light. DanpaShade **Aura** also transforms dull shade into welcoming illuminated shade. And because our louvres are bespoke, you can determine the colour and opacity of the illuminated shade.

The Z-Frame design also utilizes Shade-Shift technology that filters daylight as the sun traces the sky, providing perfect ambience throughout the day. When you shade with style you can enjoy a comfortable, light controlled interior and an awe-inspiring exterior.

Sky Blue | Horizontal 90°



## Shade with comfort.

### Temperature control.



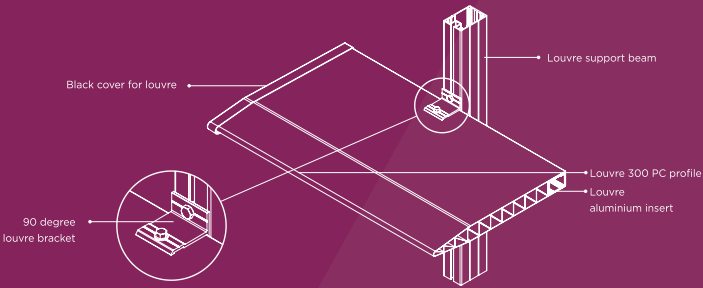
Keep cool in summer and comfortable in winter without relying so heavily on your HVAC system. **Aura's** energy efficient system helps your building to reduce solar radiation and reflect your style with one shading solution.

## Shade with the times.

### Retrofit or future-fit your building.



The featherweight construction of the **Aura** system can be elegantly retrofitted to almost any building without damage to the building's façade. And should you ever need a change of style, simply switch out the louvres and reset the mood.



## Shade with impact.

### Any two colours you desire.



Make a statement with **Aura's** revolutionary shading solution. The fin-shaped panel carries two alternating colours and textures specified to your unique choice.

Experience a colour-shift effect that brings the building to life. As your viewing angle changes, the colours blend to give your structure a fresh look every time.



Temperature  
control



Retrofit or  
future-fit



Multiple  
colours at one  
time

## Shade and upgrade.

### Optimized daylight.



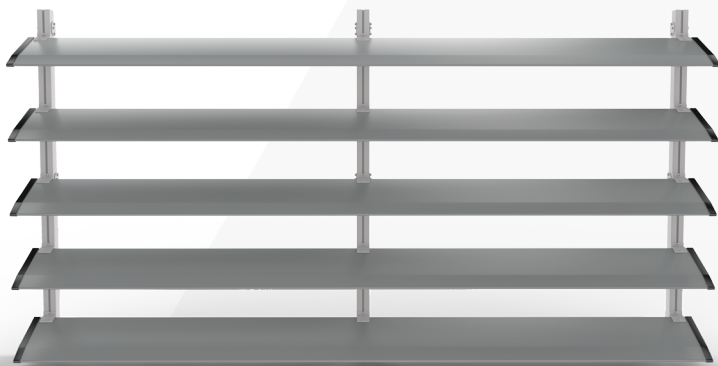
Upgrade your building's interior and soak up the aura of the improved atmosphere. The upgraded high-quality environment is achieved when sunlight is filtered through our advanced Z-Frame internal panel structure. Most of the harsh sunlight is blocked by the angled opaque fin, whilst a small amount of light is allowed through via the alternating vertical translucent fin. Once the natural light enters the interior, the quality of light is transformed and controlled into a welcoming diffused hue.

## Shade your way.

### Horizontal or vertical.



There's more than one way to style a building. DanpaShade's **Aura** system can be installed horizontally, vertically or both, on the same building. To add that extra touch, **Aura's** aluminium bracket fittings enable each fin to be installed at three separate angles; 90°, 45° and 22.5°.



Horizontal or  
vertical



Optimized  
daylight



Going green

## Shade with care.



Going green should never go out of style.

DanpaShade **Aura** lowers a building's heat without curbing the benefits of natural light, thus reducing the use of air conditioning and electric lighting. We'll help you achieve the latest green building standards or governmental building efficiency regulations and set you on the path to having a Net-Zero building.



FURTHER DETAILS

[www.danpal.com](http://www.danpal.com)

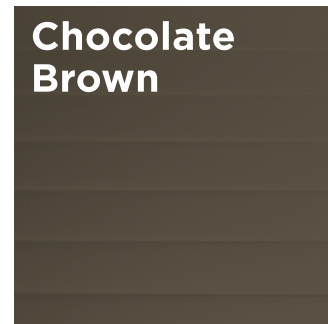
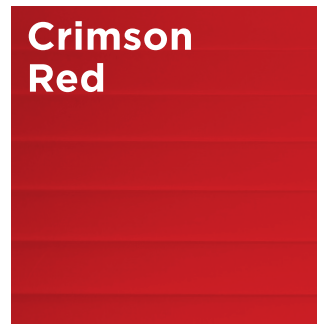
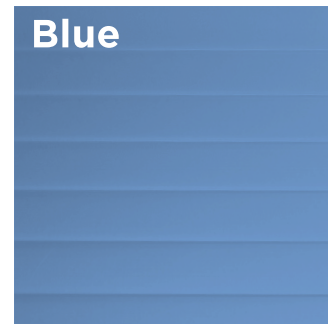
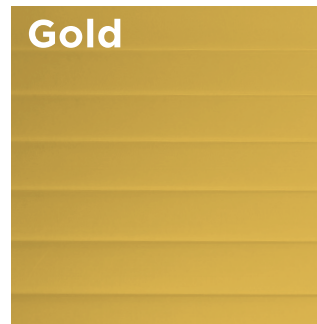
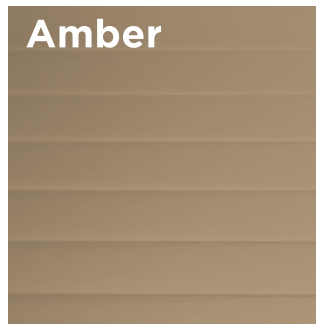
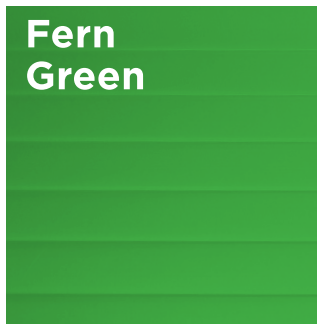






**Shade with colour.**

Contact us for our full Aura colour palette.





Crimson Red & Thunder Grey

unique  
**dualcolour**  
internal KINETIC effect



**Shade with style.**



[www.danpal.com](http://www.danpal.com)

